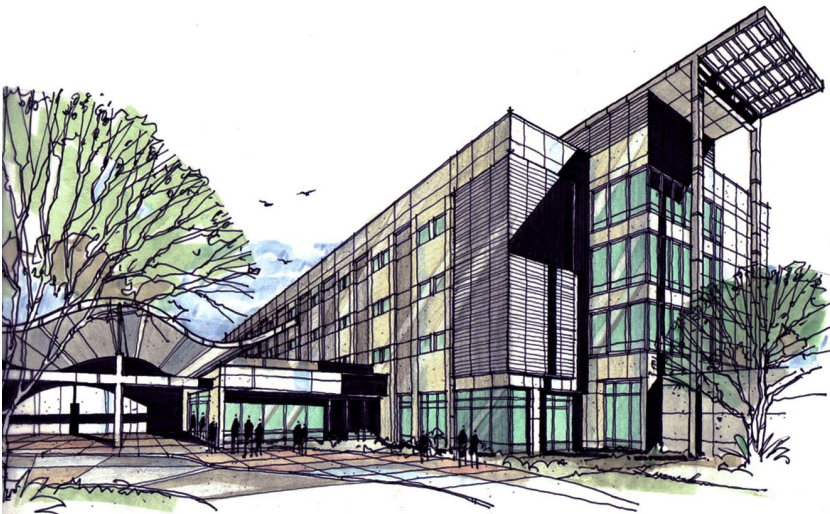


Support the Clarksburg Community Hospital

For several years Adventist HealthCare has worked in an open and collaborative manner with Clarksburg residents on the future Clarksburg Community Hospital and a comprehensive medical campus that will expand access to health care for the region. This project is critical to the long-term health of the Clarksburg community.

- **Comprehensive Health Services:** Clarksburg Community Hospital will be a full-service facility offering a range of high-quality inpatient services, including adult medical/surgical, obstetrics and newborn, ambulatory surgical, emergency, radiologic/diagnostic and intensive care. The campus will also include much-needed health clinics for low-income and uninsured residents.
- **Thoughtful Planning:** The Clarksburg hospital and medical campus already has traffic and land-use approvals in place, respecting the environment and blending seamlessly into the surrounding community of businesses and residences.
- **Convenient Location for Access to Care:** The Clarksburg medical campus will be located right off Interstate 270 and Route 121 and plans also include a skilled nursing-care center, physician offices, outpatient treatment facilities and a day-care center. Clarksburg is the fastest growing community in Montgomery County and the hospital and medical campus will be there to meet the needs of residents.
- **Complements Existing Health Resources:** The Clarksburg campus will complement already existing medical services in the area, including the Germantown Emergency Center; a primary care clinic for uninsured residents; a prenatal clinic for low-income women and physician offices.
- **Catalyst for Economic Growth:** The hospital and medical campus will help spark economic development, including more than 1,000 jobs, to ensure that Clarksburg becomes the vital community as envisioned by county planners and local residents.
- **Status of State Approval:** State regulators are currently reviewing the Clarksburg hospital proposal, which along with the Germantown Emergency Center, will provide greater access to medical care for the entire upcounty compared to a last-minute proposal for a hospital on Montgomery College's Germantown campus that will harm nearby health-care services.



For more information and to register your support for the Clarksburg medical campus, go to www.ClarksburgHospital.com or call 301-315-3042.